



RECCE

For the 2019 Rally Colorado on July 26th-27th, 2019 in Rangely, Colorado



"Held under the General Competition Rules of ARA"

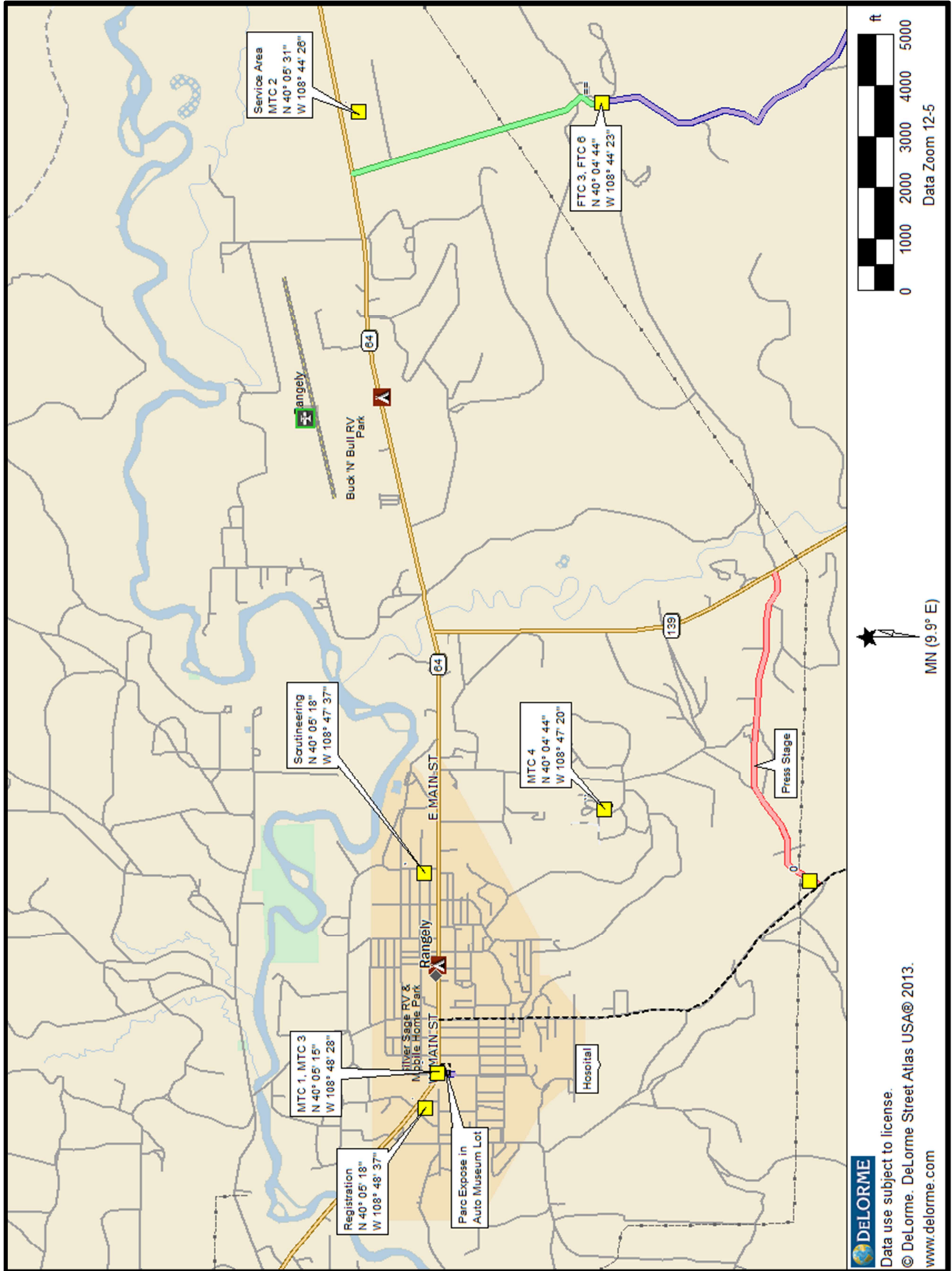
RALLY COLORADO EMERGENCY CONTACT NUMBERS

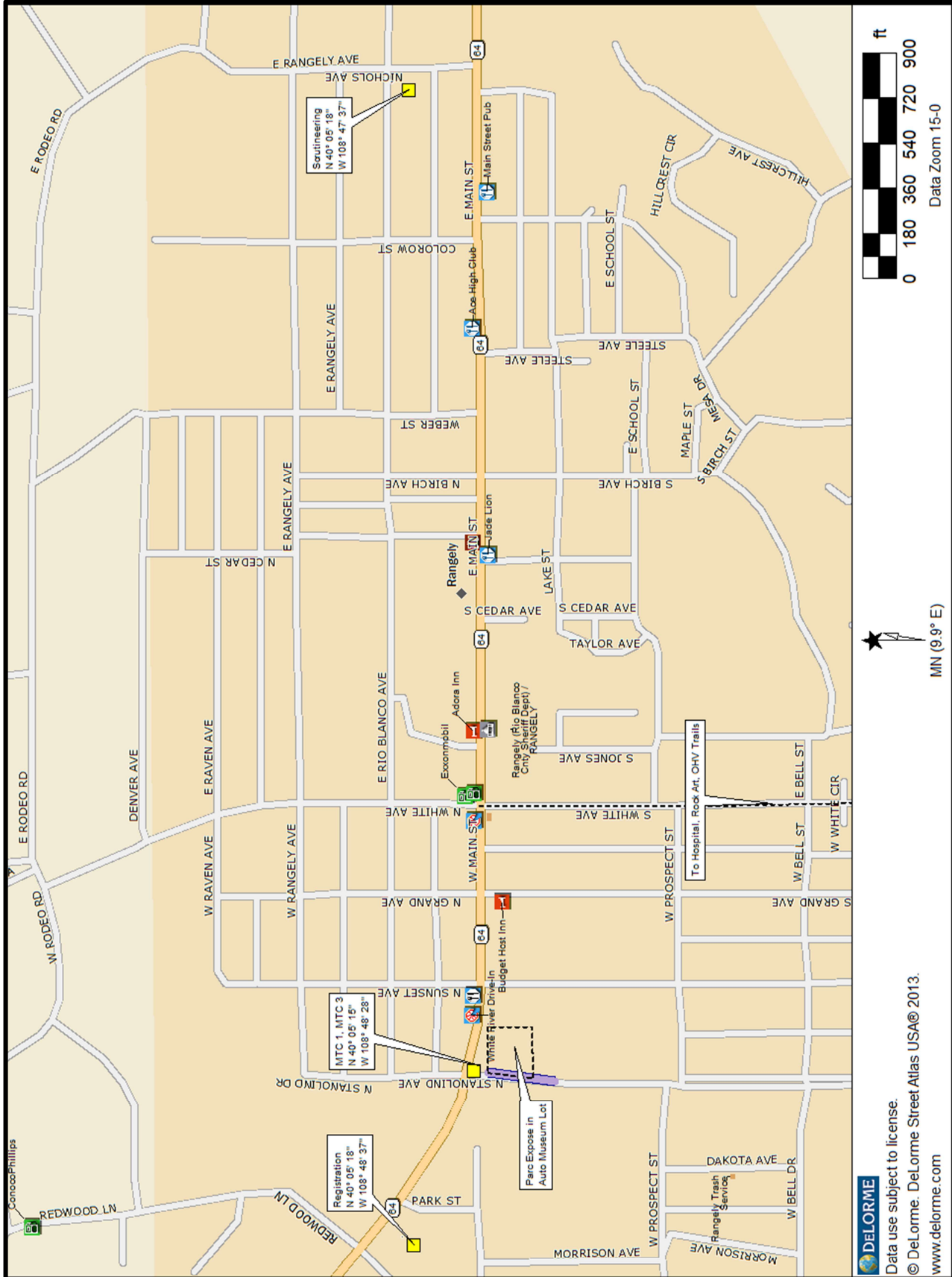
Use 911 for Emergencies in Rio Blanco County

Ambulance	911 (or 970-878-9620)	Rangely EMS
Fire Department	911 (or 970-878-9620)	Rangely Fire District
	911 (or 970-878-9620)	Rio Blanco Fire Protection District
Sheriff's Office	911 (or 970-878-9620)	Rio Blanco County
Police Department	911 (or 970-675-8466)	Rangely Police Department
Hospitals:		
Rangely	970-675-5011	Rangely District Hospital 225 Eagle Crest Drive Rangely, CO
Grand Junction	970-298-2273	St. Mary's Medical Center 2635 N 7 th Street Grand Junction, CO
Rally Headquarters	970-675-8888	Blue Mountain Inn

COMMUNICATION FREQUENCY PLAN

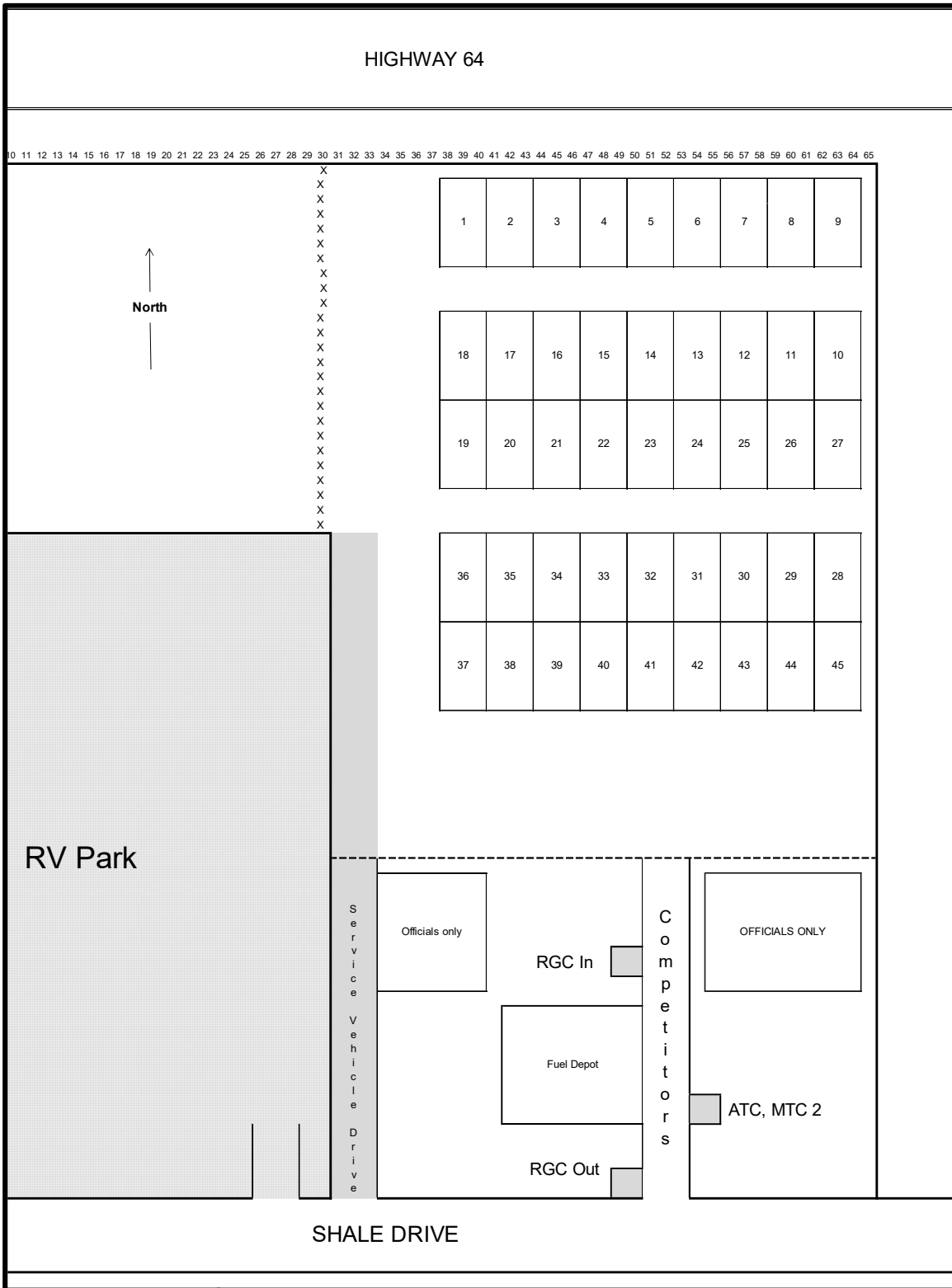
Because of the terrain and remoteness, telephone and radio communication can be difficult. The rally will be utilizing 800mhz SO (public safety band) VHF repeaters.





DELOIRME
Data use subject to license.
© DeLorme. DeLorme Street Atlas USA® 2013.
www.delorme.com

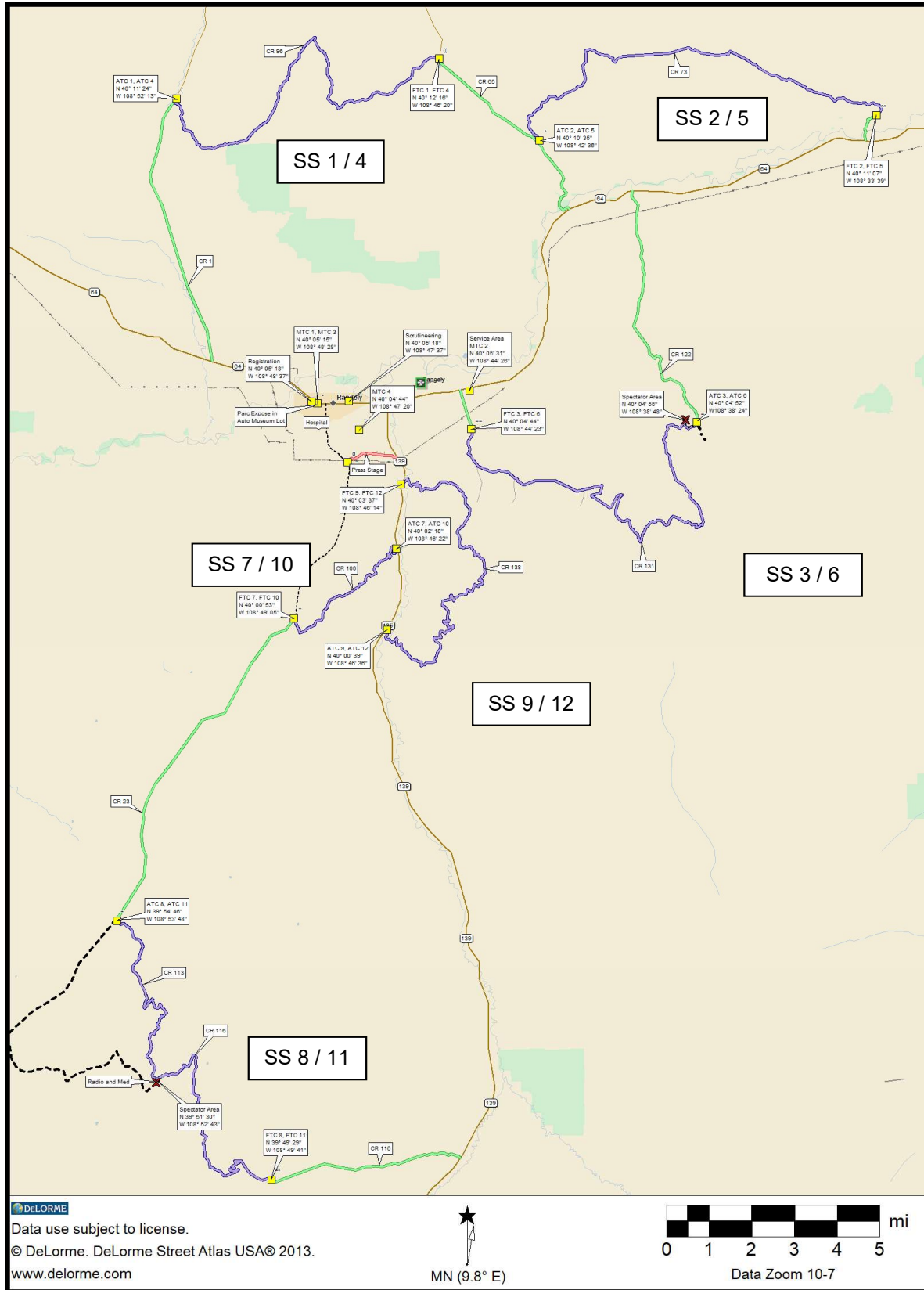
Service Area Layout

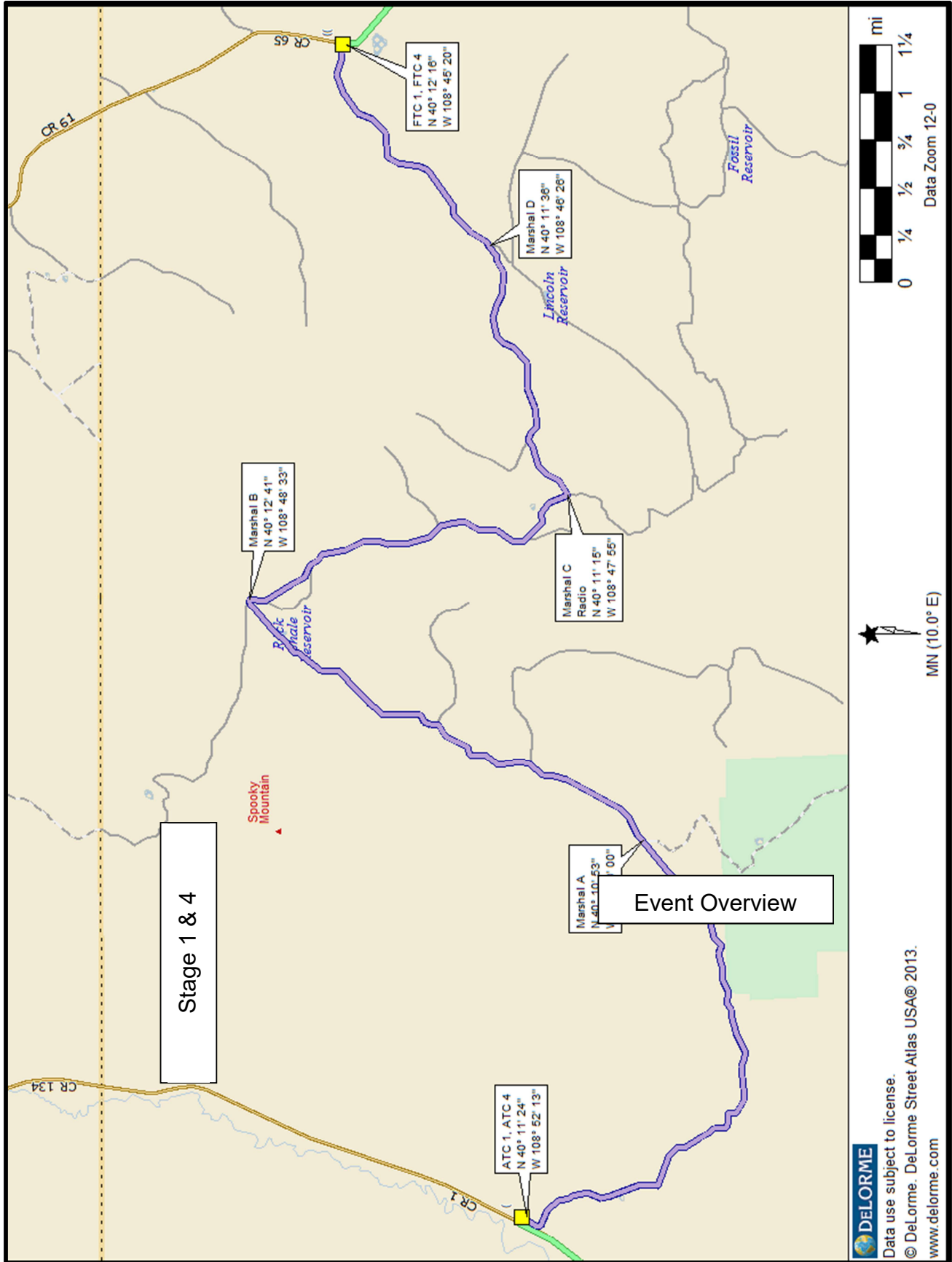


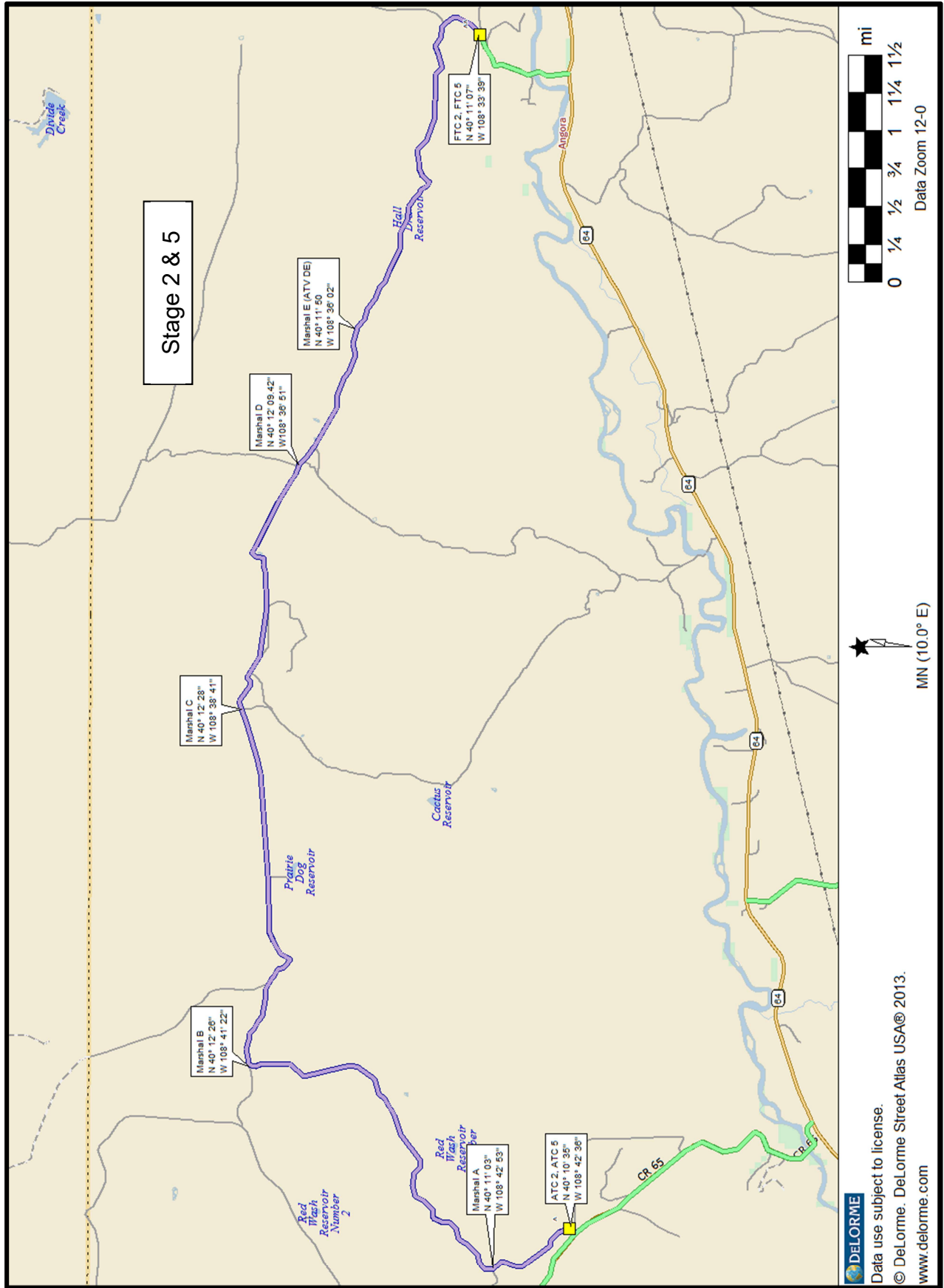
Friday Pre-Start Lineup

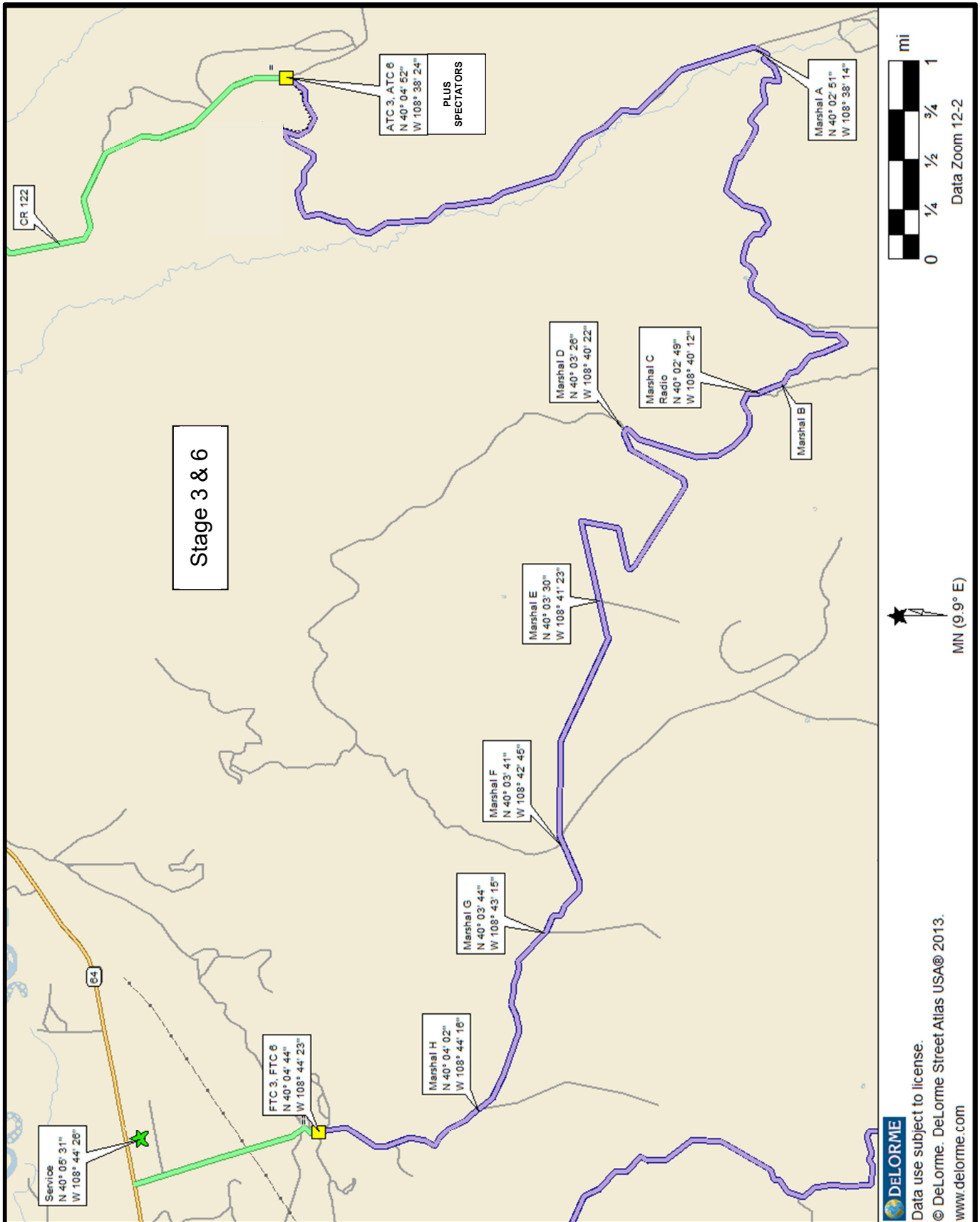


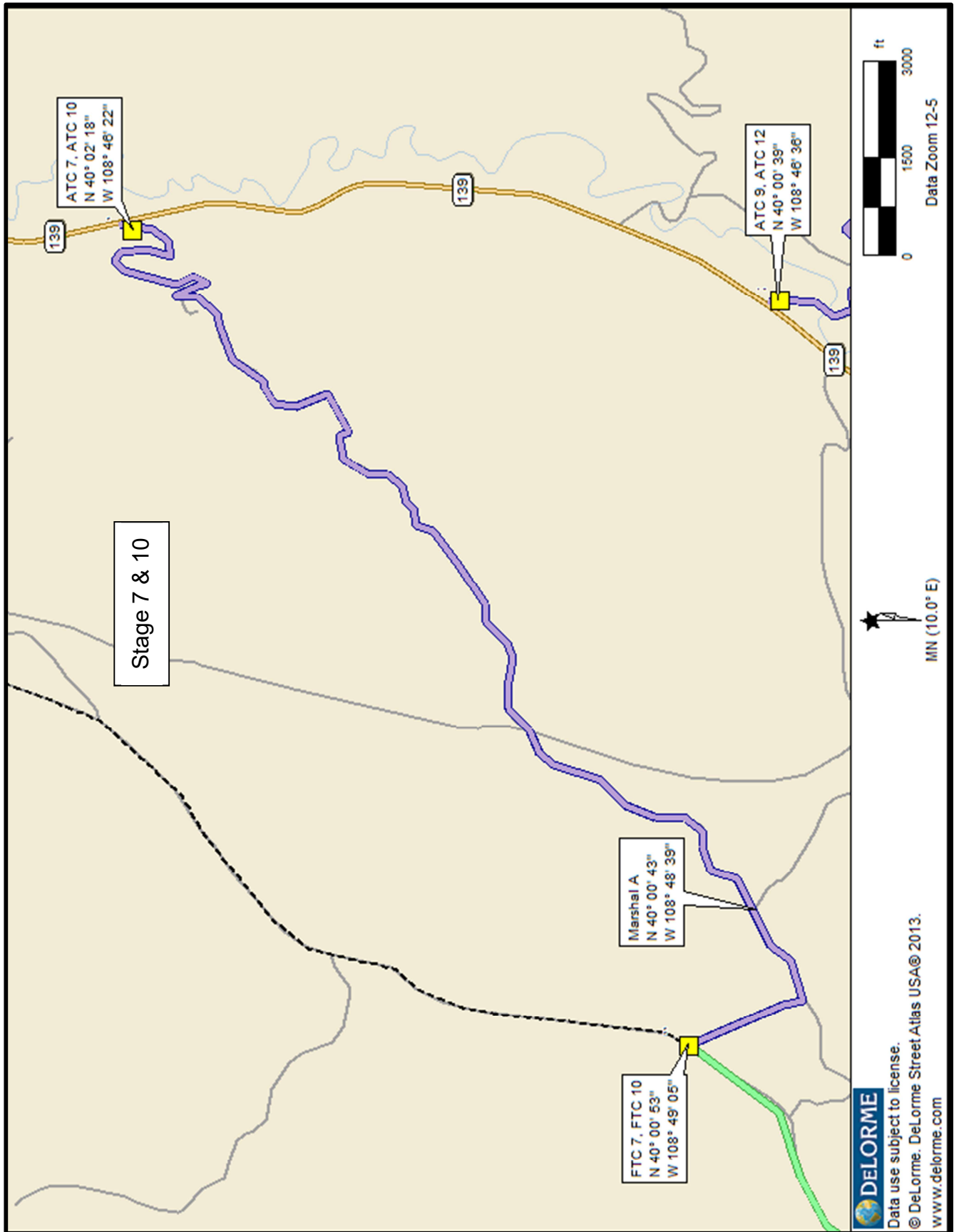
Overview Map

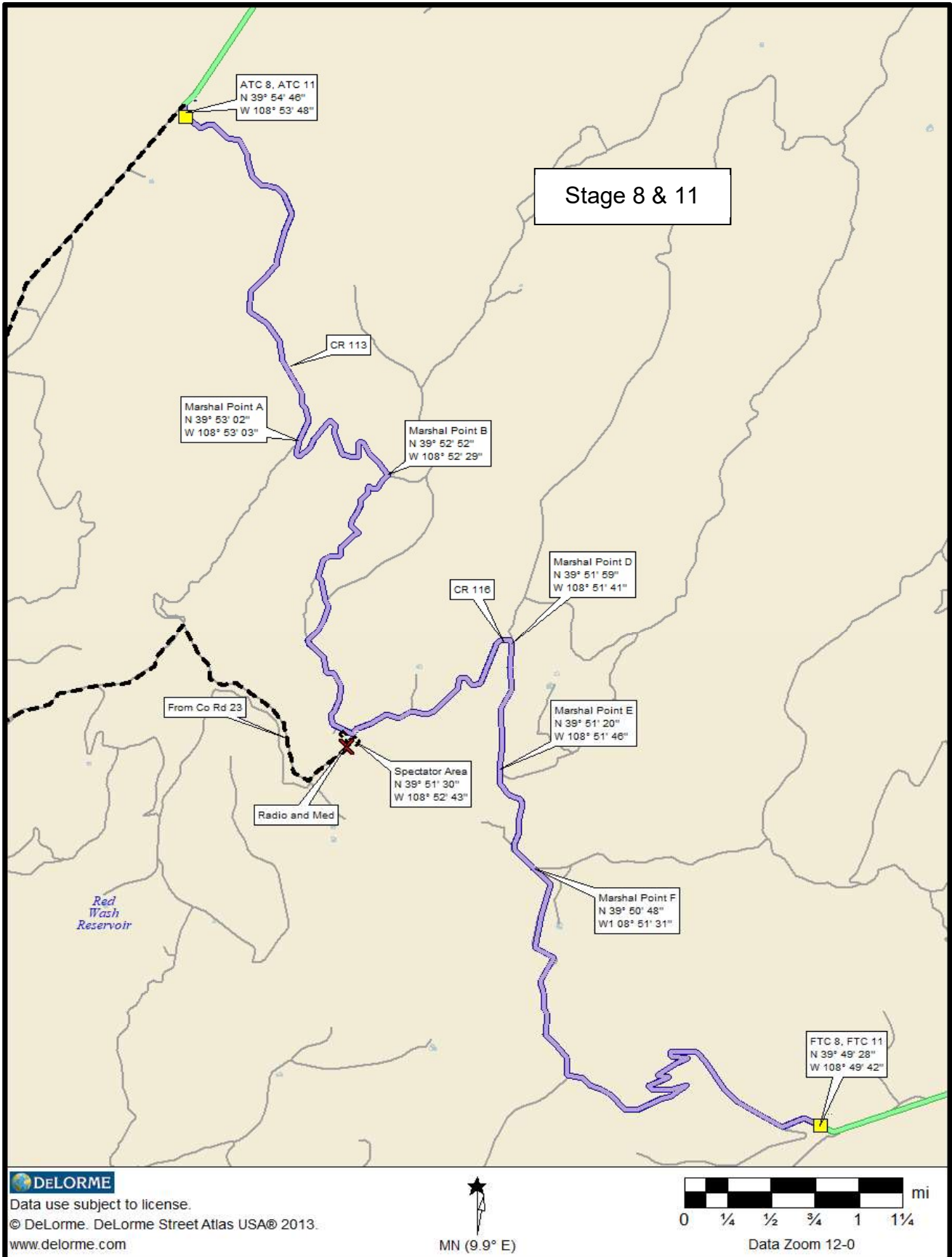












DeLORME

Data use subject to license.

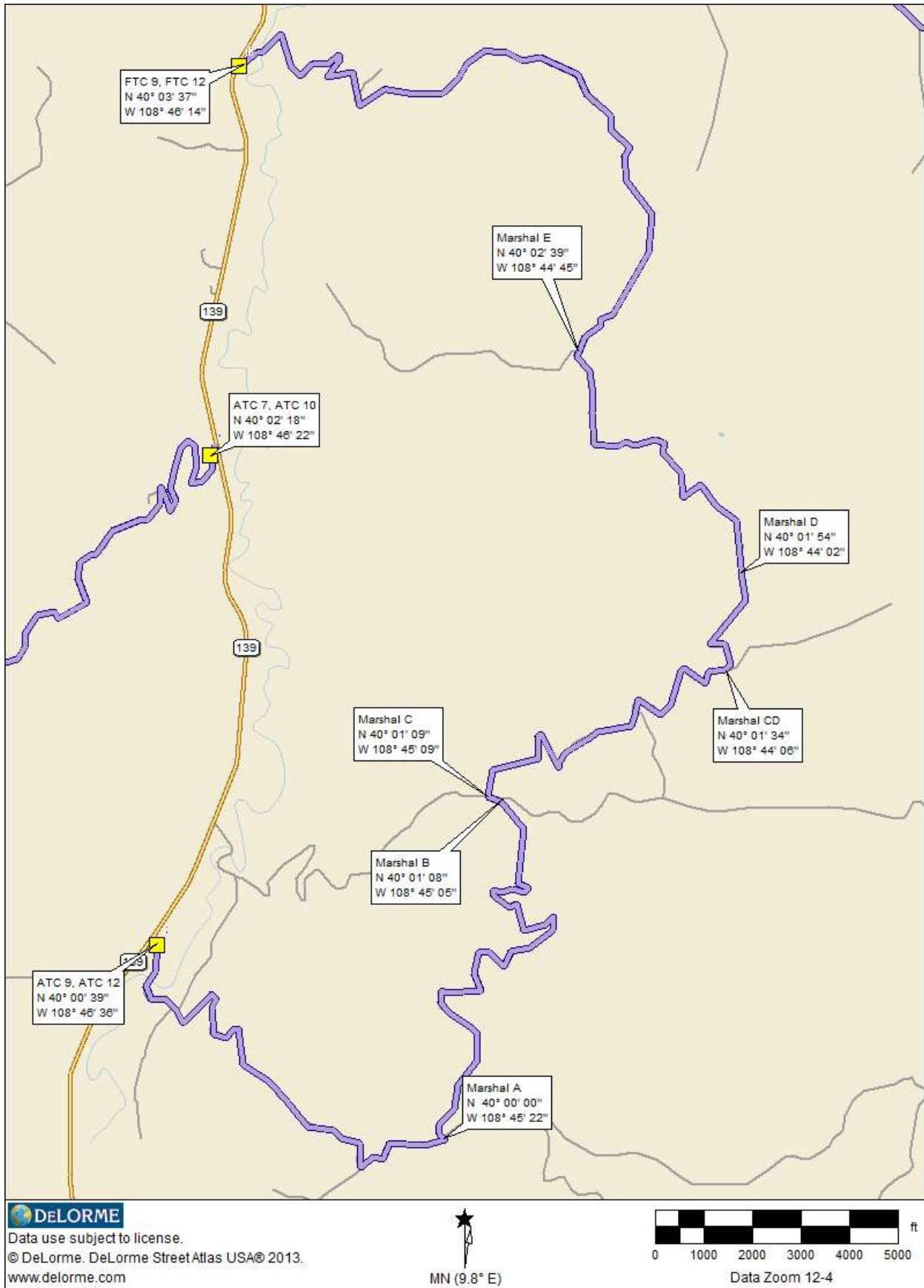
© DeLorme. DeLorme Street Atlas USA® 2013.

www.delorme.com

MN (9.9° E)

0 1/4 1/2 3/4 1 1 1/4 mi

Data Zoom 12-0



Overall Recce Procedures

You will need your stage notes, route book, and these recce instructions. If available, an identification sticker is to be affixed to the upper passenger side corner of the front windshield. You are requested to drive with your headlights on. Your recce vehicle must be a normal street vehicle without signage or competition-like vehicle decorations.

There is only time for one pass of each stage and you may drive them only during the times indicated in the time specified for recce in the Supplemental Regulations. **Each pass must always be in rally direction.** We always have workers on the stages, including the several days and nights preceding the rally. They are always alert for unauthorized competitor or crew inspections of stages.

Stage starts or finishes may or may not have start marshals present; these control teams will typically be parked facing you. They will have a time-control sign at their car. Please pull alongside in turn. The control teams will log your time before allowing you to go.

There may be observation controls monitoring speed on recce, both transit and stage sections. They will have a time-control sign at their car. Please pull alongside in turn. The control teams will log your highest measured speed before allowing you to go. They will apply the penalties of the ARA Rules and the Rally Colorado Supplemental Regulations if warranted.

Speed limits are 30 mph on stages, 40 mph on all other unpaved roads and 65 mph on all paved highways unless posted or noted otherwise in these instructions or the route book transits they incorporate. The “slow” speed used for setting the stage schedule is 20 mph so you shouldn’t have to rush through the stages. Take your time.

During recce you may encounter oncoming traffic, off-highway vehicles (OHV, UTV, SXS), gas & oil workers, livestock (moo), wild horses, local residents, and our stage crews. Please use appropriate caution while driving – there are many corners and crests on the stage roads where visibility is very limited.

Recce Route Instructions

The recce schedule has been set up so you should have about 45 minutes for a lunch/rest stop in Rangely.

Control locations can be determined using your route book mileage combined with the special stakes alongside the road. The stakes will be identified as ATC, SS, FF, or FTC with the corresponding stage number.

Recce of Friday Stages

- Recce begins at the Official Start at 128 S. Stanolind Ave on the corner of Main Street.

Follow your routebook from MTC1 to ATC1

- Your travel time will be approx. 15 minutes
- Expect a queue at the start of SS 1/4
- Please park single file on the right shoulder of Co Rd 96 and await your turn

Follow your stage notes for SS 1/4 – Co Rd 96

- First car will leave here at approximately 8:00 AM
- The stage start will close at approximately 8:35 AM

Follow your routebook for the transit between stages 1/4 and 2/5

- Your travel time from FTC 1 to ATC 2 will be approximately 8 minutes

Follow your stage notes for SS 2/5 – Co Rd 73

- First car starts at approximately 8:40 AM
- The stage start will close at approximately 9:15 AM

Follow your routebook for the transit between stages 2/5 and 3/6

- Your travel time from FTC 2 to ATC 3 will be approximately 25 minutes

Follow your stage notes for SS 3/6 – Co Rd 131

- First car starts at approximately 9:40 AM
- The stage start will close at approximately 10:15 AM

Follow your routebook for the transit between stage 3/6 and Service

- Your travel time from FTC 3 to the service area will be approximately 3 minutes. **Instead of taking Shale Dr to the right**, continue straight to Highway 64 and turn left to head west into town.

Mid-Recce Break

- You will have approximately 45 minutes in Rangely before you should start the afternoon recce

Recce of Friday Stages

- Begin the next portion of recce at the Official Start at 128 S. Stanolind Ave on the corner of Main Street

Follow your routebook from MTC3 to ATC7

- Your travel time will be approx. 10 minutes
- Expect a queue at the start of SS 7/10
- Please park single file on the right shoulder of Co Rd 100 or Hwy 139 and await your turn

Follow your stage notes for SS 7/10 – Co Rd 100

- First car will leave here at approximately 11:25 AM
- The stage start will close at approximately 12:00 PM

Follow your routebook between stages 7/10 and 8/11

- Your travel time from FTC 7 to ATC 8 will be approximately 20 minutes

Follow your stage notes for SS 8/11 – Co Rd 113/116

- First car starts at approximately 11:55 AM
- The stage start will close at approximately 12:30 PM

Follow your routebook between stages 8/11 and 9/12

- Your travel time from FTC 8 to ATC 9 will be approximately 35 minutes

Follow your stage notes for SS 9/12 – Co Rd 138

- First car starts at approximately 1:05 PM.
- The stage start will close at approximately 1:40 PM

Follow your routebook between stages 9/12 and rally finish

- Your travel time from FTC 9 to the Hwy 64 / Hwy 139 intersection will be approximately 4 minutes

You should be back in Rangely between 1:45 and 2:30 PM

Don't forget to return to the Blue Mountain Inn to complete registration.